

**CERTIFIED LAND CORNER RECORDATION**

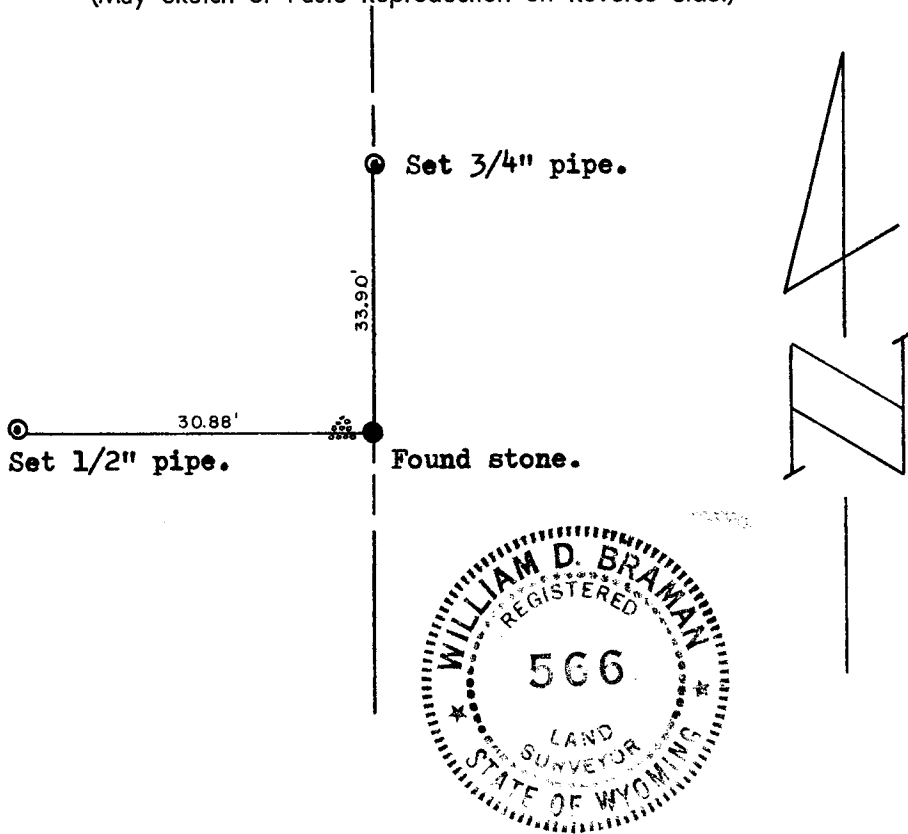
DESCRIPTION OF CORNER EVIDENCE FOUND, AND ORIGINAL RECORD (if known)

$\frac{1}{4}$  corner 26/25, T.15 N., R.63 W., 6<sup>th</sup> P.M., Laramie County, Wyoming  
 Found granite stone, 3"x9"x12".

DESCRIPTION OF MONUMENT AND ACCESSORIES ESTABLISHED  
 TO PERPETUATE THE ORIGINAL LOCATION OF THIS CORNER:

Chiseled 'X' in stone.  
 References: set 3/4" and 1/2" iron pipes, westerly and northerly. (See sketch)  
 Made stone mound on west side of corner.

SKETCH, WITH COURSE AND DISTANCE TO ADJACENT CORNER IF DETERMINED IN THIS SURVEY.  
 (May Sketch or Paste Reproduction on Reverse Side.)



I, William D. Braman certify that I have carefully performed or reviewed the work done on the diagrammed corner as reported on this recordation form and approve the same.

William D. Braman  
 Signature of Surveyor

LS 566  
 Registration No.

STATE OF WYOMING,  
 Office of Clerk and Recorder,  
 County of Laramie

This "corner record" was filed for record on the 18 day of Feb, 1977, was noted on the cross-index plat and is assigned page No. \_\_\_\_\_, in book No. \_\_\_\_\_.

Yvonne C Whitehead  
 County Official

Cross Index No. _____	T. _____	R. _____	Mer.
<u>T 21</u>	T. <u>15</u>	R. <u>63</u>	Mer.
_____	T. _____	R. _____	Mer.
_____	T. _____	R. _____	Mer.
_____	T. _____	R. _____	Mer.
_____	T. _____	R. _____	Mer.
_____	T. _____	R. _____	Mer.

T-21 15-63